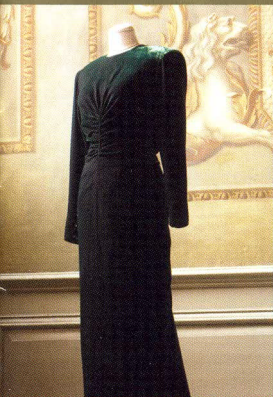


Kensington Palace



KENSINGTON PALACE



Left:
1920s court dress.

First Floor



Kenneth Griffiths

Ground Floor



Far Left:
Princess Margaret in
the entrance of her
former home.

Left:
Dress worn by Diana,
Princess of Wales.

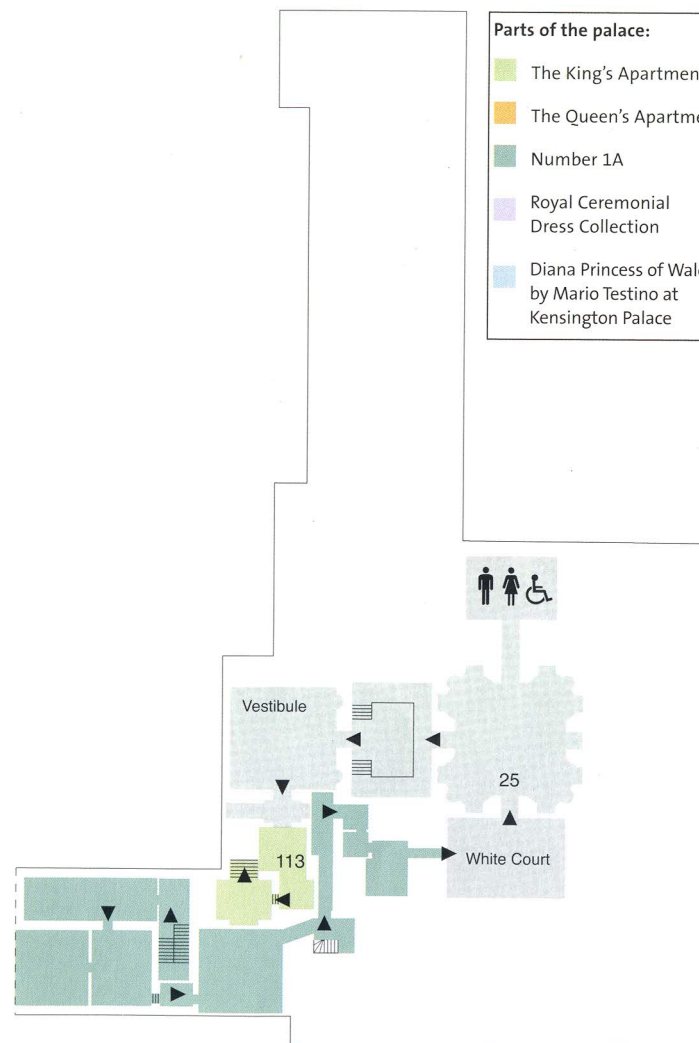
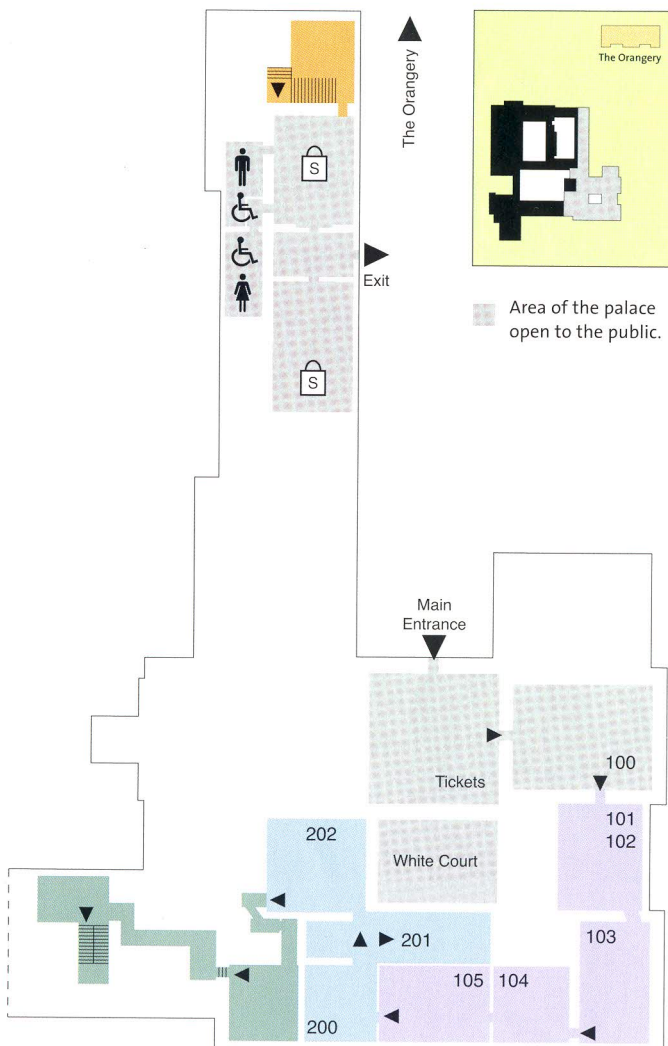
The Royal Collection © 2005.
Her Majesty Queen Elizabeth II



The Royal Collection © 2005.
Her Majesty Queen Elizabeth II

Left:
William III (1689-1702)
and Mary II (1689-94)
by William Wissing

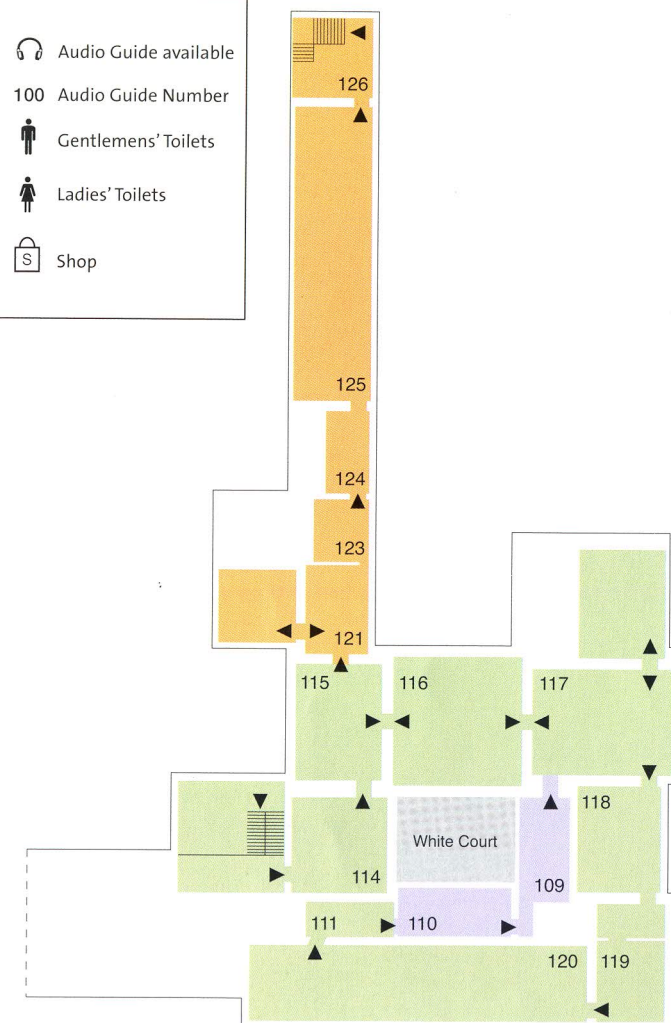
Second Floor



Parts of the palace:

- The King's Apartments
- The Queen's Apartments
- Number 1A
- Royal Ceremonial Dress Collection
- Diana Princess of Wales by Mario Testino at Kensington Palace

- Audio Guide available
- Audio Guide Number
- Gentlemen's Toilets
- Ladies' Toilets
- Shop




What to see

Your tour will take you through five areas of the palace, which illustrate various aspects of life in a royal palace and clothing worn for court occasions.

The Royal Ceremonial Dress Collection

The magnificence of court occasions is perhaps best illustrated through the splendid clothing people have worn at court. Dating from the 18th century to the present day, the Royal Ceremonial Dress Collection comprises dress worn by officials and dignitaries at ceremonial occasions, court dress worn by people attending formal assemblies held by monarchs and clothing worn by members of the Royal Family. This series of rooms explores the pageantry and etiquette surrounding court occasions and explains how tailors and dressmakers made these luxurious clothes. The displays include lavish embroidered court suits and sparkling court dresses.

Time: 20 minutes 

Number 1A Kensington Palace

Apartment 1A is now open to visitors for the first time and is the most recent addition to the tour of the palace. Displays in a selection of rooms introduce many people who have lived in the apartment over the years, including various senior courtiers, the Duke of Sussex, Princess Louise, HRH The Princess Margaret and Lord Snowdon. The exhibition outlines the changes the apartment has undergone under its previous occupants and offers a unique glimpse of life in the palace.

Time: 25 minutes



The Royal Collection © 2005
Her Majesty Queen Elizabeth II

Each part of the tour is marked with a different colour on this leaflet. If you need help finding your way, please ask one of our staff.

Diana, Princess of Wales by Mario Testino

This exhibition features a unique selection of photographs of Diana, Princess of Wales alongside a display of her evening dresses. Mario Testino's images taken for Vanity Fair magazine turned out to be the last official portrait photographs of Diana, Princess of Wales. The images accompanied an article published to coincide with the auction of 79 of the Princess's dress for charity in New York in July 1997.

Nine of the gowns sold at the auction, including dresses worn for the photo-shoot, will be united with Mario Testino's photographs.


Time: 20 minutes 

Sponsored by

HSBC Private Bank 

The State Apartments: The King's Apartments

Lavish painted ceilings, magnificent tapestries and paintings by artists such as Tintoretto decorate the King's Apartments, which include the King's Gallery, built for William III shortly before his death in 1702. For the first time in decades, visitors can enter the King's Apartments via Christopher Wren's impressive King's Staircase and experience the grandeur of these spacious rooms as they were originally intended to be seen.

Time: 25 minutes 

The State Apartments: The Queen's Apartments

Notice the remarkable difference between the enormous public areas and the smaller, more intimate rooms as you move from the King's Apartments to the Queen's. Within this series of private rooms is displayed 17th-century Chinese and Japanese porcelain of the style collected by Queen Mary II, as well as a splendid full-length portrait of Peter the Great, Tsar of Russia, which was painted for William III by Sir Godfrey Kneller in 1698.

Time: 15 minutes 



The Orangery

Designed by Sir John Vanburgh for Queen Anne in 1704, the Orangery is a magnificent building with corinthian columns and Grinling Gibbons wood carvings.

The Orangery is open all day offering morning coffee, imaginative light lunches, its renowned traditional afternoon teas with champagne, cucumber sandwiches, indulgent cakes and a wide range of infusions including orange blossom.

The restaurant is open from
10.00 – 18.00 (*1 March – 31 October*) and
10.00 – 17.00 (*1 November – 28 February*).



A ramp provides access for wheelchair users.

The Gardens

The gardens at Kensington Palace have taken various shapes and forms since the 17th century, reflecting changes in horticultural fashion and garden design. William and Mary, Queen Anne and Queen Caroline were all keen gardeners and all made extensive changes to the landscape. Explore the gardens, including the secluded Sunken Garden just beyond the shop exit, and take some time to enjoy their distinctive plant and wildlife.